



SANITARY CLAMP SEALS

CLAMP SEALS

Clamp Seals (also known as Tri-Clamp or Hygienic Clamp) is used in food and processing applications where a hygienic design is required. Clamp seals make fast and secure flange connections in continuously operating equipment such as:

- Tanks
- Fermenters
- Filters
- Heat Exchangers

Many other types of equipment coming into direct contact with food and beverages can also utilize clamp seals. Due to their symmetrical geometry, the clamp connections can be mounted and re-separated very easily.

DICHTOMATIK Americas has developed a portfolio of materials to meet the special demands required with the food and beverage industry as well as maintain hygienic and safety standards during the manufacturing process.

Available Materials & Certifications:

- EPDM
- FKM/Viton®
- PTFE/Teflon®
- NBR/Buna
- VMQ/Silicone
- 3A 18-03
- FDA Compliant

Need something more specialized? DICHTOMATIK also employs a team of highly-experienced sealing engineering experts. They can look at the design challenges you're facing and create custom solutions for use in your application. **Contact us today to get started.**

COMMON INDUSTRIES

- Dairy Products
- Distilleries
- Bakeries
- Breweries
- Wineries
- Produce & Meat Processing

CLAMP SEAL ASSEMBLY

The fitting connect consists of four components: two pipe fittings, one clamp assembly, and one seal. (Figure 1) The seal is installed between the two fittings. (Note: The flange lip aids in holding the seal in place during assembly and disassembly) (Figure 2) The clamp assembly is installed onto the ferrules (Figure 3) and then closes and tightened together by a wingnut or bolt. (Figure 4)

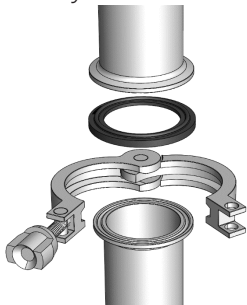


Figure 1

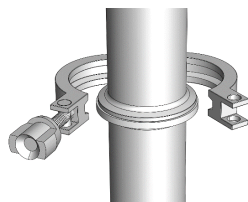


Figure 2

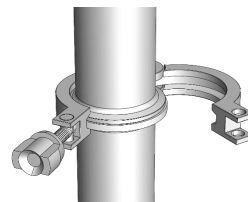


Figure 3

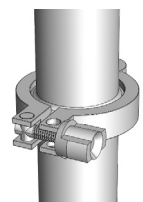


Figure 4



DICHTOMATIK

Any seal. Any time.

a brand of
 **FREUDENBERG**

FLANGED LIP SANITARY SEALS

Dichtomatik Part Number	Seal Size	Material	Seal Color
CS1-1000 E700FWH	1"	EPDM	White
CS1-1000 V850F	1"	FKM	Black
CS1-1000 N700FWH	1"	NBR	White
CS1-1000 S700FWH	1"	Silicone	White
CS1-1500 E700FWH	1.5"	EPDM	White
CS1-1500 V850F	1.5"	FKM	Black
CS1-1500 N700FWH	1.5"	NBR	White
CS1-1500 S700FWH	1.5"	Silicone	White
CS1-2000 E700FWH	2"	EPDM	White
CS1-2000 V850F	2"	FKM	Black
CS1-2000 N700FWH	2"	NBR	White
CS1-2000 S700FWH	2"	Silicone	White
CS1-2500 E700FWH	2.5"	EPDM	White
CS1-2500 V850F	2.5"	FKM	Black
CS1-2500 N700FWH	2.5"	NBR	White
CS1-2500 S700FWH	2.5"	Silicone	White
CS1-3000 E700FWH	3"	EPDM	White
CS1-3000 V850F	3"	FKM	Black
CS1-3000 N700FWH	3"	NBR	White
CS1-3000 S700FWH	3"	Silicone	White
CS1-4000 E700FWH	4"	EPDM	White
CS1-4000 V850F	4"	FKM	Black
CS1-4000 N700FWH	4"	NBR	White
CS1-4000 S700FWH	4"	Silicone	White
CS1-6000 E700FWH	6"	EPDM	White
CS1-6000 V850F	6"	FKM	Black
CS1-6000 N700FWH	6"	NBR	White
CS1-6000 S700FWH	6"	Silicone	White



CS1 STYLE

3A / FDA Compliant Sanitary Seals

MINI TRI-CLAMP SANITARY SEALS

CS2 style sanitary seals are a mini tri-clamp without a lip only used for sizes ¼" to ¾"

Dichtomatik Part Number	Seal Size	Material	Seal Color
CS2-0250 S700FWH	1/4"	Silicone	White
CS2-0375 S700FWH	3/8"	Silicone	White
CS2-0500 E7012F	1/2"	EPDM	Black
CS2-0500 E700FWH	1/2"	EPDM	White
CS2-0500 V850F	1/2"	FKM	Black
CS2-0500 V850FWH	1/2"	FKM	White
CS2-0500 N703F	1/2"	NBR	Black
CS2-0500 N700FWH	1/2"	NBR	White
CS2-0500 S700FWH	1/2"	Silicone	White
CS2-0750 E7012F	3/4"	EPDM	Black
CS2-0750 V850F	3/4"	FKM	Black
CS2-0750 V850FWH	3/4"	FKM	White
CS2-0750 N703F	3/4"	NBR	Black
CS2-0750 N700FWH	3/4"	NBR	White
CS2-0750 S700FWH	3/4"	Silicone	White



CS2 STYLE

CS3 STYLE SANITARY SEALS

CS3 Style Seal is the most common used seal and has no lip

Dichtomatik Part Number	Seal Size	Material	Seal Color
CS3-1000 E7012F	1"	EPDM	Black
CS3-1000 V850FWH	1"	FKM	White
CS3-1000 N700FWH	1"	NBR	White
CS3-1500 E7012F	1.5"	EPDM	Black
CS3-1500 E700FWH	1.5"	EPDM	White
CS3-1500 V850FWH	1.5"	FKM	White
CS3-1500 N700FWH	1.5"	NBR	White
CS3-1500 N703F	1.5"	NBR	Black
CS3-1500 S700FWH	1.5"	Silicone	White
CS3-2000 E7012F	2"	EPDM	Black
CS3-2000 V850FWH	2"	FKM	White
CS3-2000 V850F	2"	FKM	Black
CS3-2500 E7012F	2.5"	EPDM	Black
CS3-2500 V850FWH	2.5"	FKM	White
CS3-3000 E7012F	3"	EPDM	Black
CS3-3000 V850FWH	3"	FKM	White
CS3-4000 E7012F	4"	EPDM	Black
CS3-4000 V850FWH	4"	FKM	White
CS3-4000 N700FWH	4"	NBR	White
CS3-6000 V850FWH	6"	FKM	White



CS3 STYLE

USA

DICHTOMATIK
1087 Park Place
Shakopee, MN 55379
Phone: 800.328.2840

DICHTOMATIK
14445 Heathrow Forest Parkway
Houston, TX 77032
Phone: 800.682.9103

www.dichtomatik.us

CANADA

DICHTOMATIK
3900 14th Avenue
Markam, ON L3R 4R3
Phone: 905.470.2266

www.dichtomatik.ca

MEXICO

DICHTOMATIK DE MEXICO
Av. De las Misiones 1 Int. 5
Parque Industrial Bernardo Quintana
76246 El Marques, QRO
Phone: 52.442.221.6303

www.dichtomatik.com.mx

The information contained herein is believed to be reliable, but no representation, guarantees or warranties of any kind are made to its accuracy or suitability for any purpose. The information presented herein is based on laboratory testing and does not necessarily indicate end product performance. Full scale testing and end product performance are the responsibility of the user.

www.dichtomatik.us
1.800.328.2840



DICHTOMATIK
Any seal. Any time.

a brand of
 **FREUDENBERG**